

STEP 1

View after removing handles and LH Casing Fig. 2

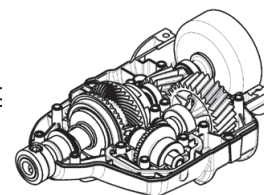


Fig. 2

STEP 2

Lift out clutch drum and spur gear assembly Fig. 3

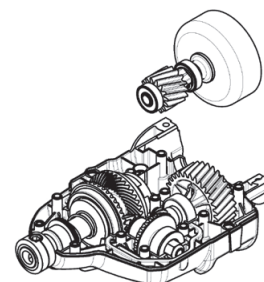


Fig. 3

STEP 3

Lift out spur drive gear and pinion assembly Fig. 4

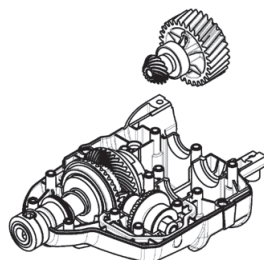


Fig. 4

STEP 4

Lift out pinion and spiral crown gear assembly Fig. 5

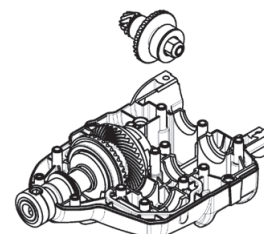


Fig. 5

STEP 5

Lift out main drive gear assembly Fig. 6

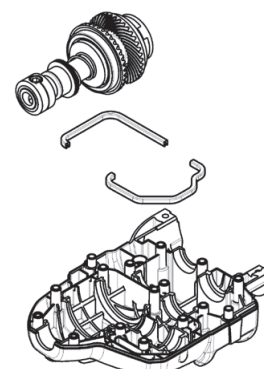


Fig. 6

Atom products, including developments of **AIRLIFT**® and **BLOWMASTER**® blowers, blower anti-vibration handle system, **SMARTFAN**® impellers, and **DRILLMASTER**® engine powered drills with automatic reverse gear and rotary throttle control, are extensively protected by many Patents Pending, Patents, Registered Designs, and Registered Shapes and many Trade Marks including Atom Trade Mark 1,463,4000. Additionally, US Patent No. 8,210,272-B2 tiller construction also covers and protects Atom Lawn Edger construction.

Registration No. 1470990 is a REGISTERED SHAPE of the Atom Lawn Edger consisting of three dimensional shape of lawn edgers having a ground engaging wheel supporting a motor or engine and a pair of handles in a wheelbarrow-like configuration.

Atom Engine Drill: Inspect – Clean – Repair – Assemble

2. Lift Drum and spur gear shaft out of casing. To replace Drum, hold tightly in gloved hand and spin off clutch nut in left hand rotation (normal RH thread) with air ratchet Fig. 7.

To reassemble fit clutch hub, drum, washer and screw nut up fully by hand.

! NOTE Washer under nut must fit over and around clutch rib spigot.

Tighten nut by holding drum with gloved hand and air ratchet drive (right hand rotation).

! NOTE Spur gear and shaft replaced as on assembly as in Fig. 3.

3. To repair drive and pinion gears, remove 6mm screw. Slide parts off. Replace parts if required. Fig. 8.

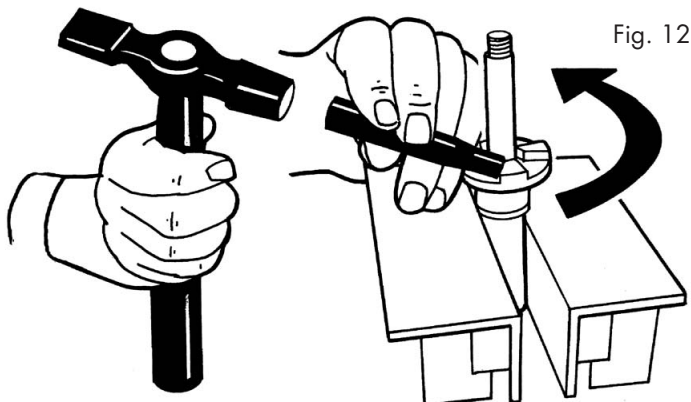
To remove pinion hold shaft in vice fitted with soft jaws (use two pieces aluminium angle) and remove pinion in right hand rotation (left hand thread). Fig. 9.

4. To replace pinion or spiral crown gear assembly, hold outer gear diameter in vice with soft jaws and remove nut in left hand (normal RH thread) rotation. Fig. 10.

5. To replace gears, bearings, clutch dogs, place rear end dog clutch vertically in a strong vice (Fig. 11) fitted with soft jaws or use two pieces of aluminium angle.

Remove locking collar, insert 12mm bar through grub screw hole as shown in Fig. 11. Turn shaft clockwise (LH thread) to remove clutch dog. Slide off all parts and inspect. Replace as required. Reverse process to assemble.

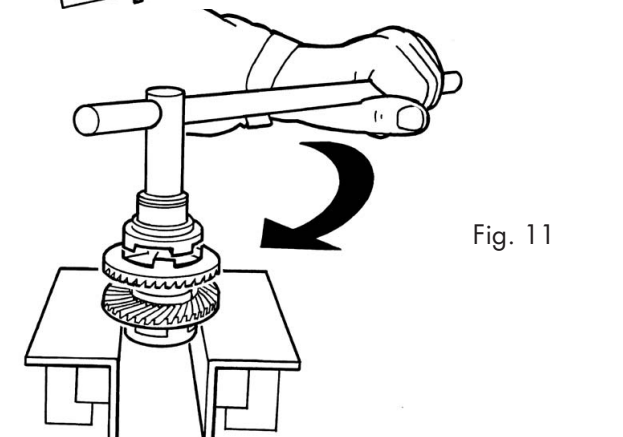
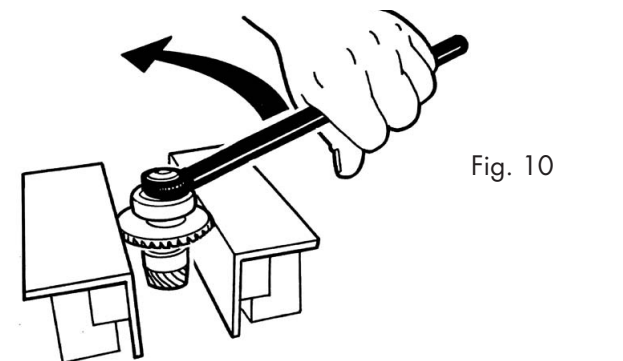
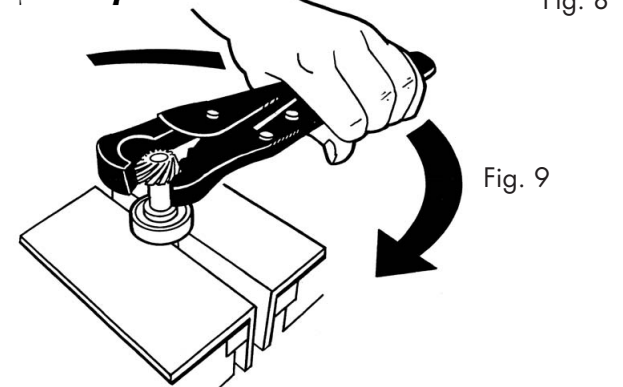
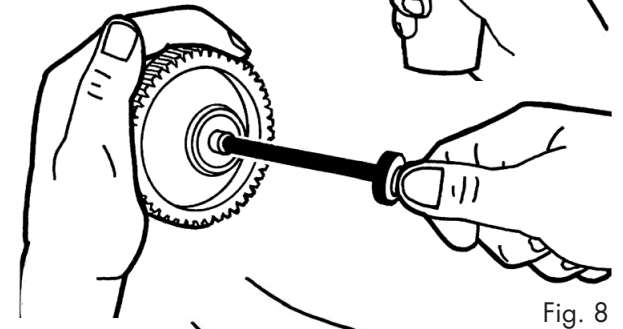
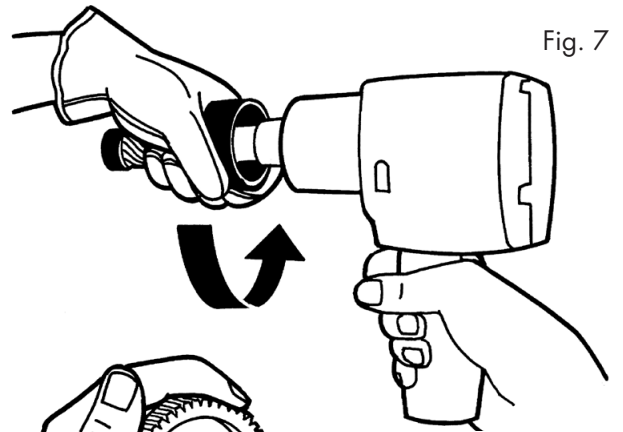
6. To remove front gear dog, place shaft in vice (Fig. 12) and tap counter clockwise (normal RH thread).



Clean all parts before reassembly. To assemble reverse above procedure. Re-assemble in (reverse) sequence of Fig. 6, 5, 4, 3 and 2. Thoroughly grease all parts and pack about 30cc of grease in and around all gear teeth. Install 2 casings rubber gaskets, place top casing on, use 4-5 screws to hold together then check gears turn smoothly. Complete final assembly.

! NOTE For engine explosions and Parts list, visit our website: www.atomindustries.com

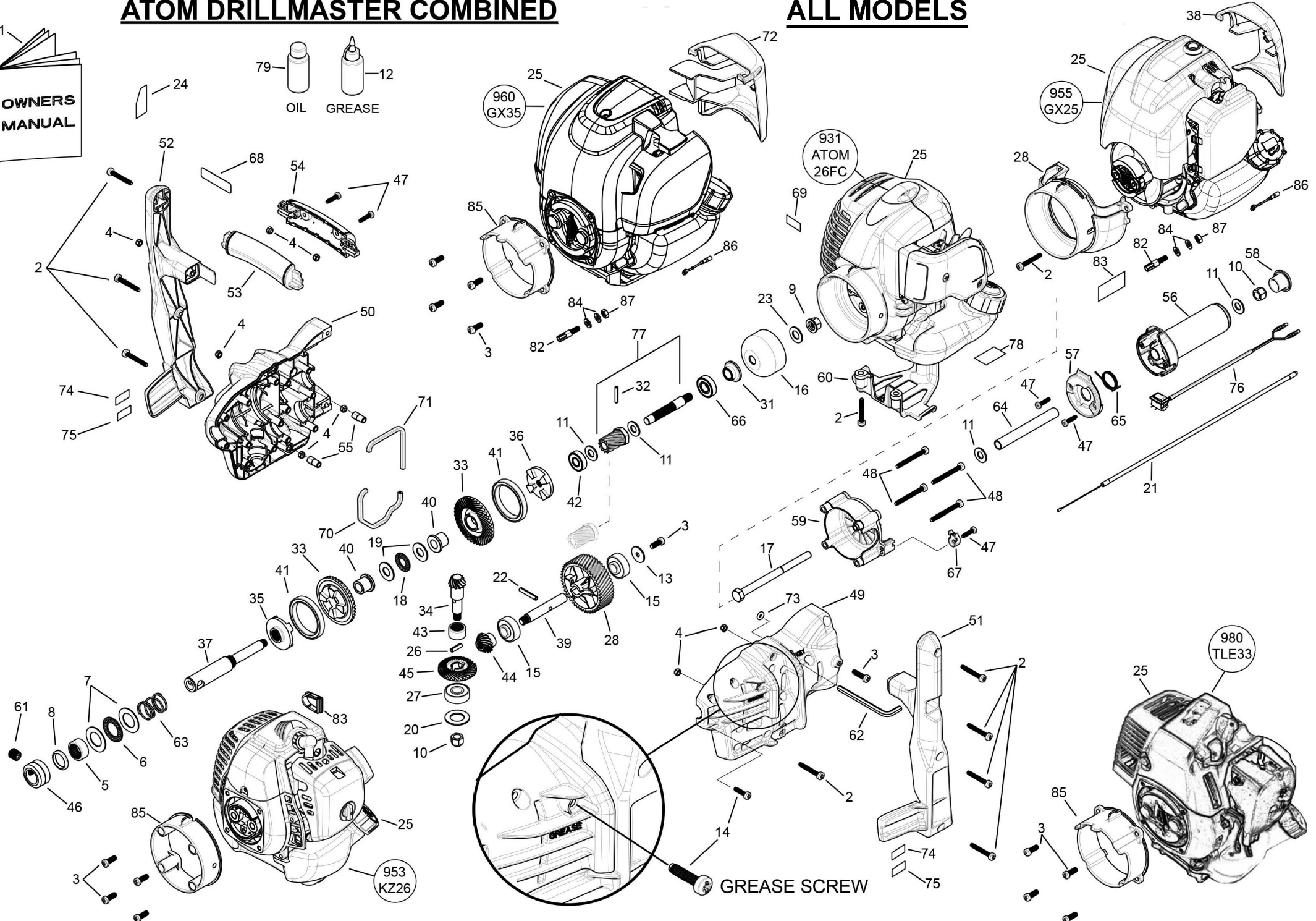
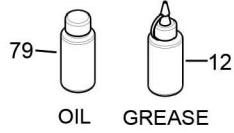
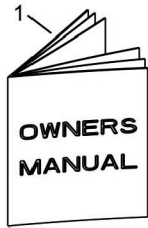
Go to **Find Parts, Order & Service Info** page and enter the engine model number. Refer to Parts List attached.



Atom Industries is a division of Solo Industries Pty Ltd – an Australian owned company that invents, designs and manufactures unique and outstanding products for local tough and hard Australian conditions with a history of international award winning gold medals, great backup and service since 1961. Atom has a policy of continuous product improvement and development and reserves the right to modify the design and appearance of products without notice.

ATOM DRILLMASTER COMBINED

ALL MODELS



960 GX35

931 ATOM 26FC

955 GX25

953 KZ26

980 TLE33

GREASE SCREW

2022/02/08

8/02/2022

ATOM PRODUCT: ATOM ENGINE DRILL COMBINED PARTS LIST - ALL MODELS WORKSHOP MANUALS PARTS LIST

| Key | Part No | Substitute Part No | Description | Key | Part No | Substitute Part No | Description | Key | Part No | Substitute Part No | Description |
|-----|---------|--------------------|------------------------------------|-----|---------|--------------------|------------------------------------|-----|---------|--------------------|--------------------------------------|
| 1 | 21775 | | MANUAL ALL MODELS | 31 | 64119 | | HUB SINTERED | 62 | 64230 | | KEY ALLEN 6AF x 90 |
| 2 | 40650 | | SCREW M5x36 | 32 | 64130 | | PIN ROLL 4 x 24 | 63 | 64231 | | DR REVERSE SPRING |
| 3 | 40651 | | SCREW M6x16mm | 33 | 64176 | | DR CROWN GEAR WITH DOG | 64 | 64232 | | DR HAN SPACER TUBE |
| 4 | 40652 | | NUT NYLOC M5 | 34 | 64177 | | DR PINION | 65 | 64233 | | DR THRO RET SPRING |
| 5 | 40912 | | BEAR NEEDLE 20x12mm | 35 | 64178 | | DR FORWARD GEAR DOG | 66 | 64235 | | BEARING 6001-2RS GRSEALS |
| 6 | 40914 | | BEAR THR 20x35x2 | 36 | 64179 | | DR REVERSE GEAR DOG | 67 | 64333WP | | DR CABLE RETAINER |
| 7 | 40915 | | WASHER REAR THRUST | 37 | 64181 | | DR MAIN SHAFT | 68 | 64335 | | LABEL WARNING DRILL HANDLE |
| 8 | 40922 | | SEAL SHAFT 20x26x4mm | 38 | 43966RN | | DEFLECTOR HONDA GX25 | 69 | 64337 | | LABEL |
| 9 | 43163 | | NUT FLANGE RH 3/8 | 39 | 64183 | | DR SPUR GEAR SHAFT | 70 | 64347 | | DR CASING SEAL 1 |
| 10 | 43172 | | NUT NYLOC 3/8 UNC | 40 | 64184 | | DR SPACER SINTERED | 71 | 64348 | | DR CASING SEAL 2 |
| 11 | 43218 | | WASHER 3/8 FLAT | 41 | 64185 | | BEAR 6809-2RS 45x58x7 | 72 | 43965RN | | DEFLECTOR HONDA GX35 |
| 12 | 43227 | | GREASE & DISPENSER | 42 | 64187 | | BEAR 10x26x8 | 73 | 64355 | | O RING 3 x 11 OD x 5 ID |
| 13 | 43484 | | WASHER 22.43 x 5.94 | 43 | 64188 | | BEAR NEEDLE 16x22x12 | 74 | 64382 | | LABEL DR HAN LOGO |
| 14 | 43790 | | SCREW M5.5x22 | 44 | 64189 | | DR GEAR BEVEL T15 | 75 | 64383 | | LABEL DR HAN DRILLMASTER |
| 15 | 43860 | | BEARING 32x10x12+4mm | 45 | 64190 | | DR GEAR BEVEL T30 | 76 | 64411 | | DR SWITCH & WIRE |
| 16 | 44312 | | DRUM CUP PRO 79x32mm (960,980) | 46 | 64192 | | DR LOCKING COLLAR 12mm | 77 | 64414 | | DR SHAFT & GEAR ASSY 12/48 (931) |
| 16 | 44318 | | DRUM CLUTCH CUP 54mm (931,953,955) | 47 | 64194 | | SCREW T20 x 19.50 SELF TAP | 77 | 64415 | | DR SHAFT & GEAR ASSY 12/33 (953,950) |
| 17 | 44439 | | BOLT G.WHEEL AXLE 3/8x5 | 48 | 64206 | | SCREW M5 x 50mm TORX-25 | 77 | 64416 | | DR SHAFT & GEAR ASSY 15/30 (960,980) |
| 18 | 62964 | | BEARING NEEDLE 12x26x2 | 48 | 64384 | | SCREW T20 4 x 50 | 78 | 63219 | | LABEL HOT MOT/OIL |
| 19 | 62965 | | WASHER THRUST 12x26x1.5 | 48 | 64385 | | WASHER 4 x 9 x 1 | 79 | 48100 | | OIL 100ML (HON GX35) |
| 20 | 62982 | | WASHER BEARING 32x18x1.6 | 49 | 64210GN | 64859GN | DR MAIN CAS LH | 79 | 48101 | | OIL 80ML (HON GX25) |
| 21 | 63263 | | CABLE THROTTLE (931) | 49 | 64210RN | 64859RN | DR MAIN CAS LH | 80 | 64859GN | | SET ENG DRILL CASING |
| 21 | 64227 | | DR THROTTLE CABLE 345+77 | 50 | 64211GN | 64859GN | DR MAIN CAS RH | 81 | 64859RN | | SET ENG DRILL CASING |
| 22 | 63275 | | PIN ROLL 5x30 | 50 | 64211RN | 64859RN | DR MAIN CAS RH | 82 | 62968 | | CABLE CONNECTOR M6 x 1.00 |
| 23 | 63277 | | WASHER 12x22.22x1 (931,953,955) | 51 | 64212WN | | DR MAIN HANDLE LH | 83 | 62969RN | | PLUG MUFFLER Z26 |
| 23 | 43116 | | WASHER 45x12x2 (960,980) | 52 | 64213WN | | DR MAIN HANDLE RH | 84 | 63457 | | WASHER 6.4 x 12.5 x 1.5 ZP |
| 24 | 63322 | | LABEL BL WARN SYMBOLS | 53 | 64216WP | | DR GRIP FRONT W/RUBBER | 85 | 63360RN | | MOUNT ENGINE Z26 |
| 25 | 48002A | | ENG HONDA GX35 Ref 765 | 54 | 64217WP | | DR GRIP BACK W/RUBBER | 85 | 63361RN | | MOUNT ENGINE PRO |
| 25 | 48004A | | ENG HONDA GX25 Ref 764 | 55 | 64218WP | | DR NUT RETAINER | 86 | 63355 | | GROUND WIRE |
| 25 | 62993A | | ENG Z26 Ref 763 | 56 | 64219WP | | DR THROTTLE HANDLE (931) | 87 | 63169 | | NUT M6 X 1mm |
| 25 | 63405A | | ENG ATOM 26FCS Ref 767 | 56 | 64234WP | | DR THR HAN W/RUB (953,955,960,980) | | | | |
| 26 | 63440 | | PIN ROLL 5 x 18 | 57 | 64220WP | | DR THRO HANDLE COV | | | | |
| 27 | 63474 | | BEARING 32 x 10 x 12 | 58 | 64221WP | | DR THR HANDLE CAP | | | | |
| 28 | 63780 | | DR HELIC GEAR 48T/12 | 59 | 64222WN | | DR THR MOUNT ATOM | | | | |
| 28 | 64344 | | DR HELIC GEAR T33/12 (953,955) | 59 | 64224WN | | DR THR MOUNT GX35 | | | | |
| 28 | 64346 | | DR GEAR HELIC T30/15 (960,980) | 59 | 64225RN | | DR THR MOUNT Mits TLE 33 | | | | |
| 29 | 63806RN | | MOUNT/FAN COWL GX25 | 60 | 64226WP | | DR TANK GUARD A26FC | | | | |
| 30 | | | | 61 | 64229 | | SCREW GRUB M12x1.25x13 | | | | |